

Name _____ # _____

Subject Fifth Melody (Level II) Teacher Code _____

23

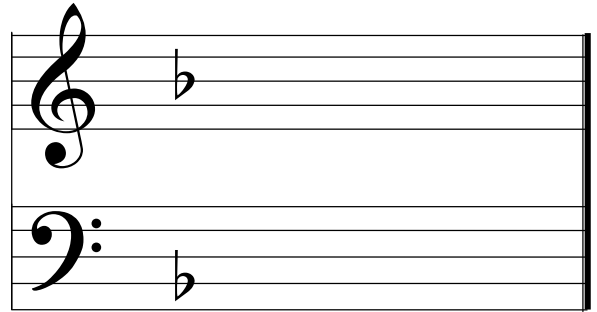
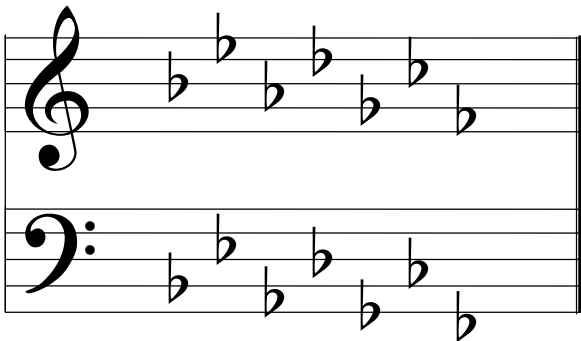
Due Date: October 29, 2009



Writing Major Flat Key Signatures

Writing Major Flat Keys- use the opposite process for identifying key signatures

- 1) Write the order of flats **up to and including the flat AFTER the key note.**
(Remember, the order of flats is **BEADGCF**)
- 2) EXCEPTION: the key of F major has one flat, Bb.



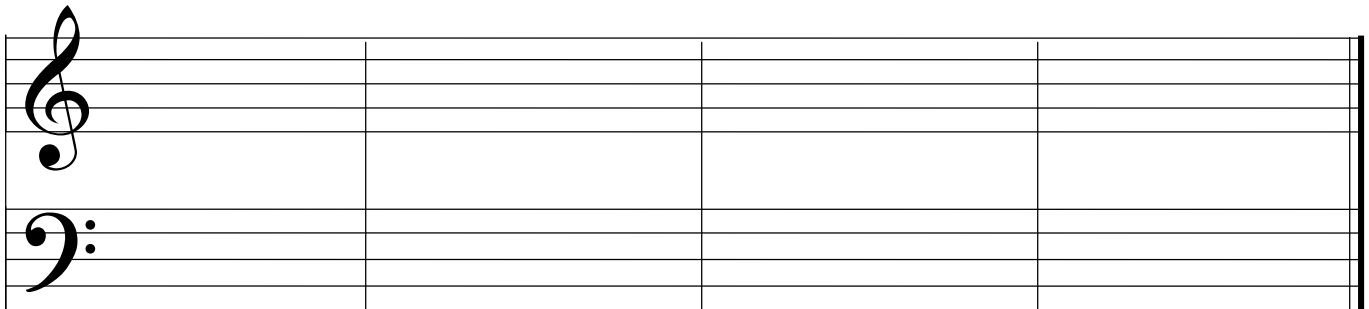
Example 1: Cb Major

Exception: The Key of F has one flat, Bb

- 1) Write all flats up to Cb (the key note) (Bb, Eb, Ab, Db, Gb, Cb) then...
- 2) Write one more flat after Cb (add Fb)

Your Assignment

- A. Draw the major sharp key signatures in treble & bass staff using the process taught above. But remember, the key of F has only 1 flat! (8pts)
 - 1) Write all the flats up to the key note (or named key).
 - 2) Then, write one more flat. Be sure to do them in the correct order and on the correct line or space (see above)



Eb Major

F Major

Ab Major

Cb Major

Learning Intervals

An interval in music is the distance between two notes in regard to pitch (how high or low the note sounds). The interval is counted from the lower note to the upper, **including both notes**. Intervals remain the same whether we use the bass clef or treble clef.

Here are some examples:

1st 2nd 3rd 5th 4th 7th 6th 8th

Your Assignment

B. Put the name of the interval in the space provided. (15pts)

1. _____ 2. _____ 3. _____ 4. _____ 5. _____

6. _____ 7. _____ 8. _____ 9. _____ 10. _____

11. _____ 12. _____ 13. _____ 14. _____ 15. _____