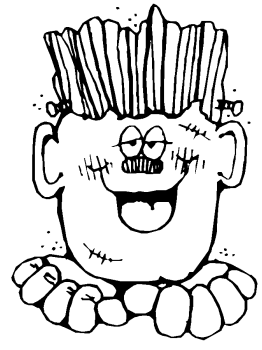
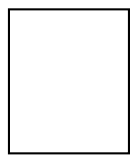


Name \_\_\_\_\_ # \_\_\_\_\_

Subject Fourth Grade Music Teacher Code \_\_\_\_\_

Due Date: October 23, 2009

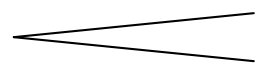


# Dynamic Markings

There are a number of signs, symbols and terms that tell us how **loud** or **soft** the music is to be played. These are called **dynamic markings**.

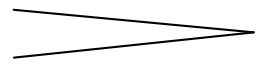
<u>SYMBOL</u>	<u>MEANING</u>	<u>PRONUNCIATION</u>
<i>pp</i>	very soft	pianissimo
<i>p</i>	soft	piano
<i>mp</i>	moderately (medium) soft	mezzo piano
<i>mf</i>	moderately (medium) loud	mezzo forte
<i>f</i>	loud	forte
<i>ff</i>	very loud	fortissimo

The markings below direct the player to increase or decrease the level of loudness.



*cresc.*

(crescendo) means to play gradually louder.



*decresc.*

(decrescendo) means to play gradually softer. This is also called diminuendo.

## YOUR ASSIGNMENT:

Fill in the blanks:

1. Dynamic markings tell us \_\_\_\_\_ . (1pt)
2. The symbol for forte is \_\_\_\_\_ . (1pt)
3. *p* means \_\_\_\_\_ . (1pt)
4. *Cresc.* means to get \_\_\_\_\_ gradually. (1pt)
5. The symbol for very soft is \_\_\_\_\_ . (1pt)

## Extra Composition Opportunity! (optional)

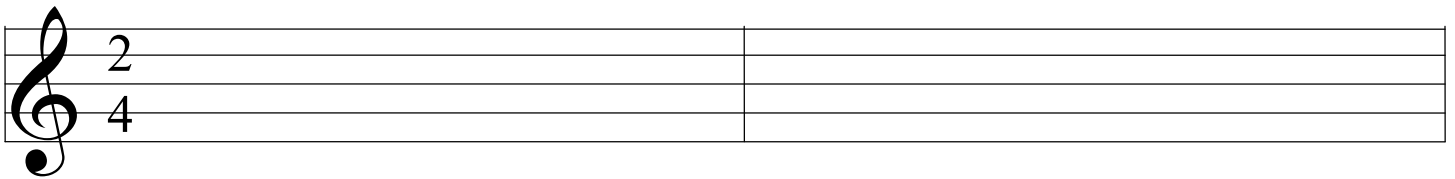
Write your own tune for the poem below using B, A, & G using the following rules and suggestions. Then, add some dynamics. ☺ Remember, only use 2 beats in each measure!

### Rules To Follow

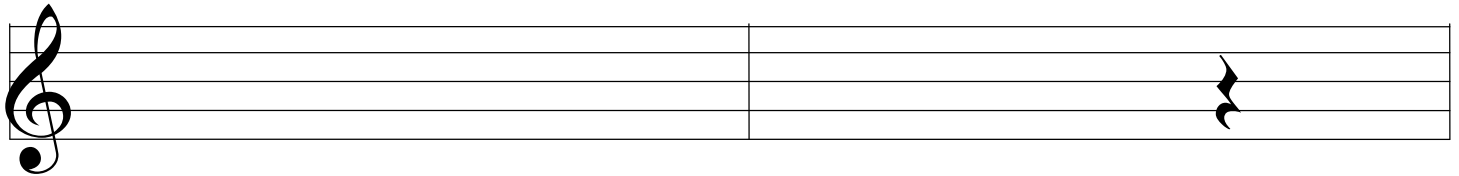
1. Start and end the song on the tonic or "do".
2. Do **not** end the question on "do".
3. Make the answer similar to the question.

### Suggestions To Follow

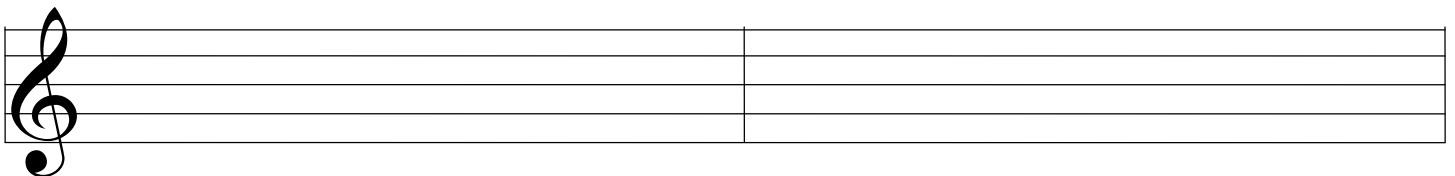
1. Use mostly repeated notes on faster rhythms.
2. Move mostly stepwise.



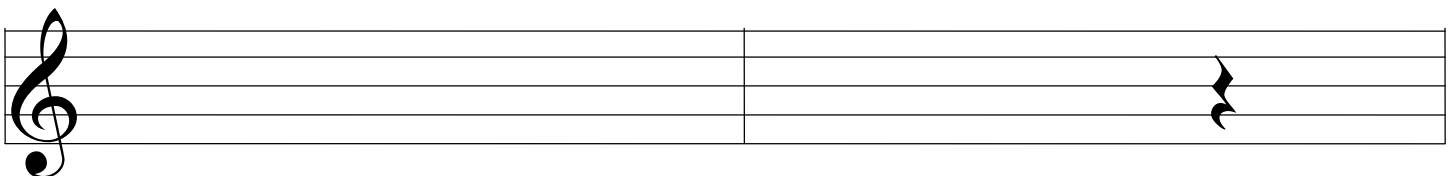
Witch - es, ghosts, and gob - lins,



Steal - ing down the street,



Knock on ever- y door - way,



Trick or treat!

