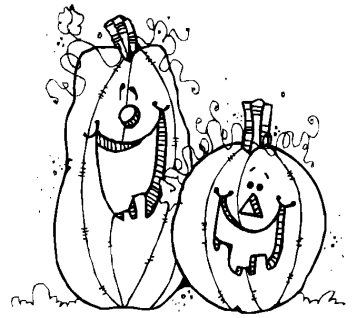


Name _____ # _____

Subject Fifth Melody (Level II) Teacher Code _____

15

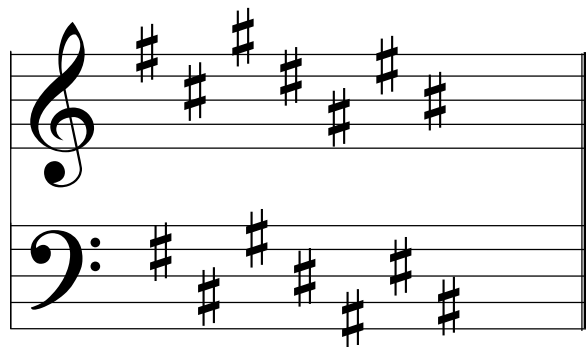
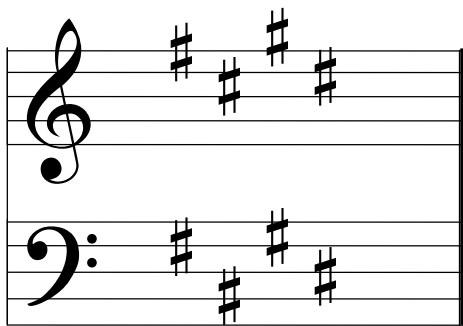
Due Date: October 15, 2009



Writing Major Sharp Key Signatures

Writing Major Sharp Keys- use the opposite process for identifying key signatures

- 1) Name the sharp note one half step below the name of the key signature (the key note)
- 2) Write all of the sharps in the correct order up to and including the sharp named above.
(Remember, the order of sharps is **FCGDAEB**.)



Example 1: to figure out the Key of E:

- 1) A half step below E (the key note) is D#
- 2) Write all the sharps up to & including D#
(ie. F#, C#, G#, D#)

Example 2: to figure out the Key of C#:

- 1) A half step below C# (the key note) is B#
- 2) Write all the sharps up to & including B#
(ie. F#, C#, G#, D#, A#, E#, B#)

Your Assignment

- A. Draw the major sharp key signatures for the keys below by following the steps below. (8pts)
- 1) Name the note that is 1/2 step below the named key.
 - 2) Then, write all the sharps up to & including that sharp on the treble and bass staff below.
Be sure to do them in the correct order and on the correct line or space (*see above*)

1/2 step below G _____ 1/2 step below A _____ 1/2 step below D _____ 1/2 step below C# _____

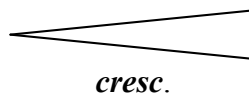
	G Major	A Major	D Major	C# Major

Dynamic Markings

There are a number of signs, symbols and terms that tell us how **loud** or **soft** the music is to be played. These are called **dynamic markings**.

<u>SYMBOL</u>	<u>MEANING</u>	<u>PRONUNCIATION</u>
<i>pp</i>	very soft	pianissimo
<i>p</i>	soft	piano
<i>mp</i>	moderately (medium) soft	mezzo piano
<i>mf</i>	moderately (medium) loud	mezzo forte
<i>f</i>	loud	forte
<i>ff</i>	very loud	fortissimo

The markings below direct the player to increase or decrease the level of loudness.



(**crescendo**) means to play gradually louder.



(**decrescendo**) means to play gradually softer. This is also called **diminuendo**.

Your Assignment

Fill in the blanks:

- Dynamic markings tell us _____ . (1pt)
- The symbol for forte is _____ . (1pt)
- p* means _____ . (1pt)
- Cresc. means to get _____ gradually. (1pt)
- The symbol for very loud is _____ . (1pt)
- m* means _____ . (1pt)
NOTE: You can do this! Just think about it... ☺
- Pianissimo means to play _____ . (1pt)

