

Name _____ # _____

Subject Fifth Melody (Level II) Teacher Code _____

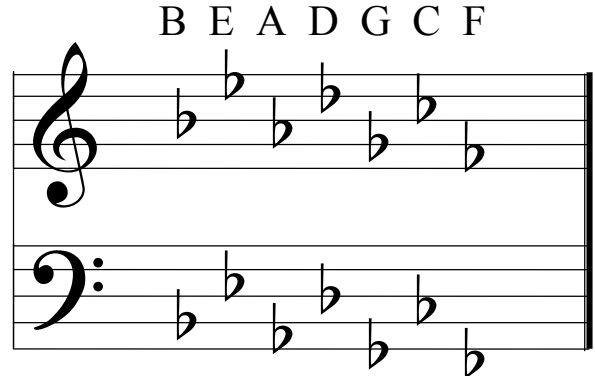
20

Due Date: October 22, 2009

Major Flat Key Signatures

The Order of Flats

The flats are **always** written in the same order of the staff. You'll notice that the order spells the word "**BEAD**" with the letters "**GCF**" at the end. They are also the same order of the sharps backwards! Take 2 minutes and memorize the order of flats now.



The Placement of Flats

It is also important to remember that the flats are **always** placed on the same line or space of the staff. For example, the first flat on the treble staff is **always** on the 3rd line of the treble clef, the Eb **always** on the 4th space, etc.

Naming Flat Key Signatures

To discover the name of a MAJOR FLAT KEY there is an easy 1-step process. Watch out for the exception, though! The key signature with only 1 flat (Bb) is F MAJOR. All other flat keys have a flat sign (*b*) in its name (*ie. Bb Major, Eb Major, etc.*)

- 1) Name the NEXT TO THE LAST FLAT in the key signature. This **is** the name of the major sharp key!

Bb Major	Ab Major	Gb Major	Eb Major

Remember, the key of F Major has only 1 flat. ☺

Naming Major Flat Key Signatures

Your Assignment

A. Circle the next to the last flat for all key signatures with more than one flat. Then, write the names of these Major flat key signatures (*it is the name of the flat you circled!*). (16pts)

1. _____

2. _____

3. _____

4. _____

5. _____

6. _____

7. _____

8. _____

B. Write the order of FLATS (**BEADGCF**) two times on each bass and treble staff.
Hint: they should look just like the example on page 13. (4pts)