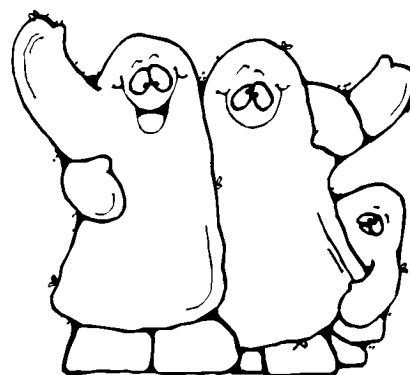


Name _____ # _____

Subject Fifth Grade Music Teacher Code _____ 25Due Date: October 29, 2009

The Bass Staff in Review

This is a **bass clef**. It is used for **low notes**. It is sometimes called the **F clef** because it begins on the F line and has two dots on either side of the F line.

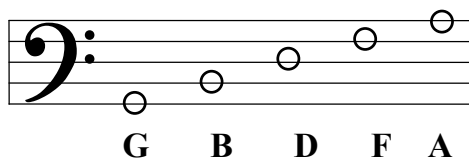


A staff with a bass clef sign is called a **bass staff**.

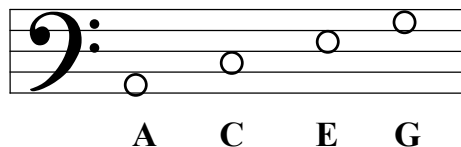
F line →



The notes on the bass staff **lines** are **G B D F A**. To help remember, we use the saying **Great Big Dogs Fight Animals**.



The notes on the bass staff **spaces** are **A C E G**. We use the saying **All Cows Eat Grass** to remember.



YOUR ASSIGNMENT:

A. What is a saying to help you remember the letter names of the **bass clef lines**? (2pt)

B. What is a saying to help you remember the letter names of the **bass clef spaces**? (2pt)

C. Write in the letter names below these notes. Hint: each measure spells a different word! (6pts)



1. _____ 2. _____ 3. _____

Learning Intervals

An interval in music is the distance between two notes in regard to pitch (how high or low the note sounds). The interval is counted from the lower note to the upper, **including both notes**. Intervals remain the same whether we use the bass clef or treble clef.

Here are some examples:

1st 2nd 3rd 5th 4th 7th 6th 8th

.....

YOUR ASSIGNMENT:

A. Put the name of the interval in the space provided. (15pts)

1. _____ 2. _____ 3. _____ 4. _____ 5. _____

6. _____ 7. _____ 8. _____ 9. _____ 10. _____

11. _____ 12. _____ 13. _____ 14. _____ 15. _____