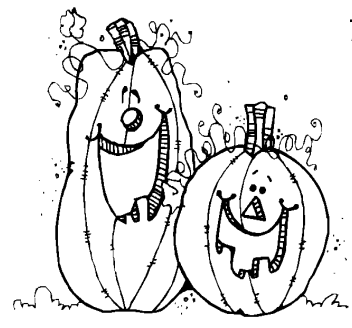


Name \_\_\_\_\_ # \_\_\_\_\_

Subject Fifth Grade Music Teacher Code \_\_\_\_\_

Due Date: October 15, 2009

20

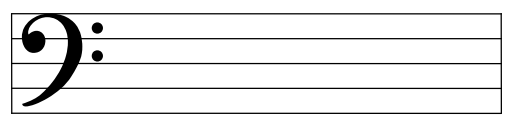


# Lines of the Bass Staff

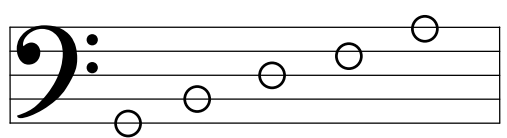
This is a **bass clef**. It is used for **low** notes. Instruments like the tuba and string bass read music written in the bass clef.



A staff with a bass clef sign is called a **bass staff**.



The notes on the bass staff **lines** are **G B D F A**.



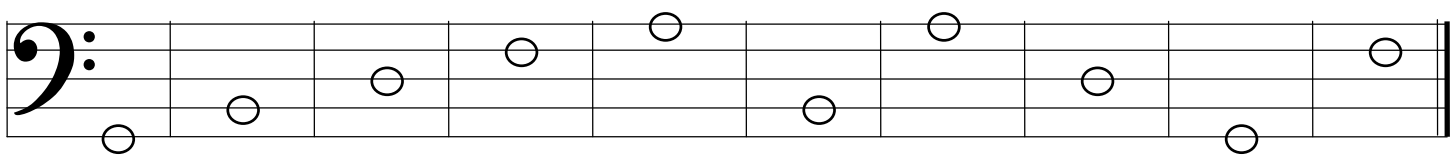
**G B D F A**

A saying to help you remember the lines of the bass staff is:

**Great Big Dogs Fight Animals**

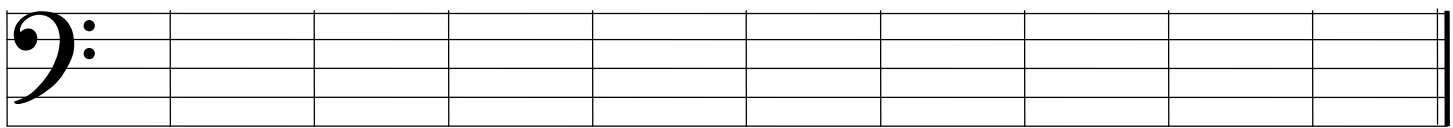
## **YOUR ASSIGNMENT:**

A. Write in the letter names of these notes next to the number. (5pts)



1.      2.      3.      4.      5.      6.      7.      8.      9.      10.

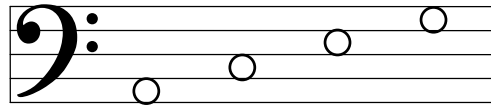
B. Write notes on the **lines** over each letter name. (5pts)



A      G      D      F      B      G      A      D      B      F

## Spaces of the Bass Staff

The notes on the bass staff  
**spaces** are **A C E G**.



**A C E G**

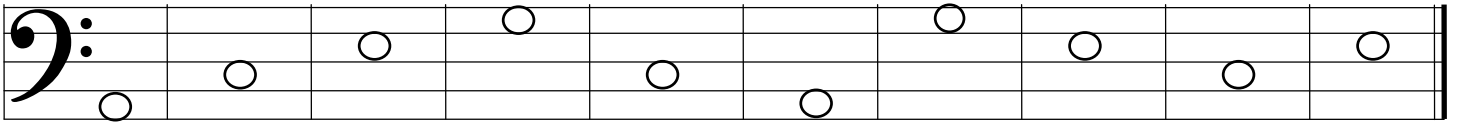
A saying to help you remember the spaces of the bass staff is:

**All Cows Eat Grass**

Hey! I just noticed that both of the sayings for the bass staff talk about animals!  
Maybe it would help to remember that **the bass staff uses animals sayings ...**

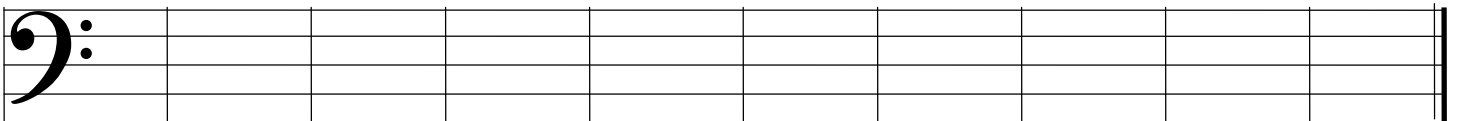
### YOUR ASSIGNMENT:

A. Write in the letter names of these notes next to the number. (5pts)



1.      2.      3.      4.      5.      6.      7.      8.      9.      10.

B. Write notes in the **spaces** over each letter name. Your notes should fit neatly **between** the lines. (5pts)



**G      A      E      C      A      G      E      C      G      A**

